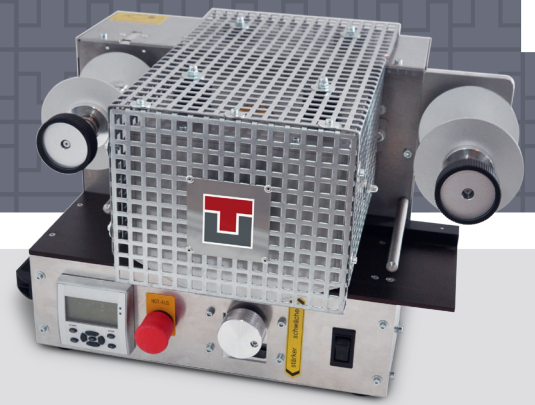


Hot Stamping Machine EVO



Compact and cost-efficient hot-stamping solution

The HOT STAMPING MACHINE EVO is a compact and cost-efficient machine for hot stamping embossed plates, which is available in the two standard sizes (120 mm and 240 mm working width). The HOT STAMPING MACHINE EVO requires less than half a square meter of space. It provides high quality hot stamping in combination with a safety level that exceeds the respective CE regulations. In order to make the installation even more effortless, we have reduced the weight of the machine significantly. EVO enables you to colour embossed license plates quickly and cleanly. This is possible with retro-reflective or vinyl sheeting in a compact, sustainable and cost-effective aluminium construction: ... and let EVO do the rest!

Advantages

- | | |
|--|---|
| ▪ Space saving, compact construction | ▪ Simple and quick replacement of the hot stamping foil |
| ▪ Quick heat-up time | ▪ Very maintenance friendly with quick roller change |
| ▪ Low weight for easy transportation | ▪ Power saving mode |
| ▪ Protection against overheating of the drum | ▪ Digital display |

Technical Data

| | | |
|-----------------------|--------------------------------------|-----------------------|
| Stamping width | up to 120 mm | up to 240 mm |
| Electrical connection | 230 V, 50 Hz, 1.100 W | 230 V, 50 Hz, 2.100 W |
| Foil unwinder | Mechanical brake | |
| Foil rewinder | Magnetic particle coupling | |
| Heat-up time | approx. 7 minutes | |
| Stamping speed | 2,5 m / min | |
| Temperature range | 0 - 230° C electronically adjustable | |
| Dimensions (LxWxH) | 500 x 375 x 340 mm | 700 x 550 x 340 mm |
| Weight | 35 kg | 55 kg |

