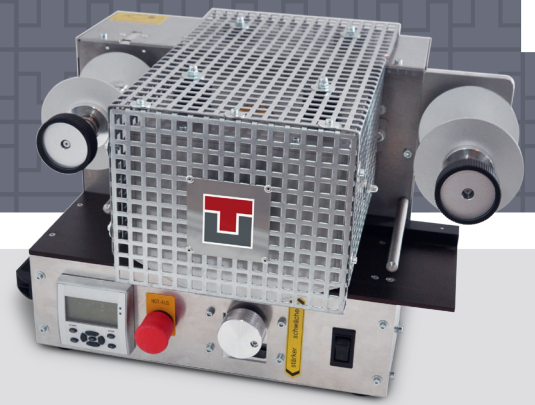


Hot Stamping Machine EVO



Compact and cost-efficient hot-stamping solution

The HOT STAMPING MACHINE EVO is a compact and cost-efficient machine for hot stamping embossed plates, which is available in the two standard sizes (120 mm and 240 mm working width). The HOT STAMPING MACHINE EVO requires less than half a square meter of space. It provides high quality hot stamping in combination with a safety level that exceeds the respective CE regulations. In order to make the installation even more effortless, we have reduced the weight of the machine significantly. EVO enables you to colour embossed license plates quickly and cleanly. This is possible with retro-reflective or vinyl sheeting in a compact, sustainable and cost-effective aluminium construction: ... and let EVO do the rest!

Advantages

- | | |
|--|---|
| ▪ Space saving, compact construction | ▪ Simple and quick replacement of the hot stamping foil |
| ▪ Quick heat-up time | ▪ Very maintenance friendly with quick roller change |
| ▪ Low weight for easy transportation | ▪ Power saving mode |
| ▪ Protection against overheating of the drum | ▪ Digital display |

Technical Data

Stamping width	up to 120 mm	up to 240 mm
Electrical connection	230 V, 50 Hz, 1.100 W	230 V, 50 Hz, 2.100 W
Foil unwinder	Mechanical brake	
Foil rewinder	Magnetic particle coupling	
Heat-up time	approx. 7 minutes	
Stamping speed	2,5 m / min	
Temperature range	0 - 230° C electronically adjustable	
Dimensions (LxWxH)	500 x 375 x 340 mm	700 x 550 x 340 mm
Weight	35 kg	55 kg

